

Department of Engineering
Tim Bryan, P.E., County Engineer

3137 South Liberty Street, Canton, MS 39046
Office (601) 790-2525 FAX (601) 859-3430

MEMORANDUM

December 15, 2021

To: Sheila Jones, Supervisor, District I
Trey Baxter, Supervisor, District II
Gerald Steen, Supervisor, District III
Karl Banks, Supervisor, District IV
Paul Griffin, Supervisor, District V

From: Tim Bryan, P.E., PTOE
County Engineer

Re: Adjustment of Entergy Distribution Facilities
Bozeman Road

The Engineering Department requests the Board approve the attached agreement for the adjustment of Entergy Distribution Facilities on Bozeman Road that are in conflict with the roadway improvements. The cost for these adjustments is \$672,626.28 and are the county's responsibility as they are currently located off of public right-of-way.

SHEILA JONES
District One

TREY BAXTER
District Two

GERALD STEEN
District Three

KARL BANKS
District Four

PAUL GRIFFIN
District Five

ACTUAL COST REIMBURSEMENT AGREEMENT
FOR UTILITY RELOCATION AND ADJUSTMENT WORK

This agreement is between Entergy Mississippi, LLC ("Company") and Madison County, Mississippi ("County").

A. Due to the Bozeman Road Widening Project in Madison County, Mississippi, there is a need for relocation, adjustment, removal, or alteration of some of Company's existing electrical distribution facilities, including but not limited to utility poles together with associated wires, equipment, and other related facilities ("Company's Facilities").

B. The parties have agreed on County's pro-rata share of the total actual cost for relocation, adjustment, removal, or alteration of Company's Facilities based on the proportion of affected distribution utility poles that are located within public road right-of-way.

Therefore, the parties agree as follows:

1. Scope of Work. Subject to the terms and conditions of this agreement, Company agrees to relocate, adjust, remove, or alter Company's Facilities as shown by the attached plans, and cost estimate, and Company will perform or contract for the engineering, design, procurement, construction, and other work, functions, and activities necessary to do so ("Utility Work").
2. Actual Cost Reimbursement. County will reimburse Company for County's pro-rata share of 92.31% of all reasonable and necessary actual costs of the Utility Work, including but not limited to costs for material, labor (employees and contractors), equipment, associated overheads, and real property rights incurred in, related to, or for the performance of the Utility Work (collectively, "Total Cost"). The attached cost estimate shows that the Total Cost is estimated to be approximately \$672,626.28, and the dollar amount for County's pro-rata share is estimated to be approximately \$620,901.32. Due to the nature of cost estimating, the Total Cost could be different from the estimate despite Company's intention to provide an accurate cost estimate. County will be responsible for its pro-rata share of the Total Cost, regardless of whether it is more or less than previously estimated.
3. Invoice & Payment. Within a reasonable time after the Utility Work has been completed, Company will determine the Total Cost and submit an invoice for County's pro-rata share, which could be higher or lower than estimated. County will remit payment to Company in a timely manner after receipt of the invoice notwithstanding any differences there may be between the Total Cost and the cost estimate.
4. Expiration of Offer. The attached cost estimate and Company's offer under this agreement will automatically expire and be deemed revoked without the need for any further action or notice unless County signs and returns the agreement, with no changes, to Company no later than January 20, 2022. Company may require a new cost estimate if County subsequently decides to proceed.
5. Third-Party Facilities. Company will not be responsible for the relocation, adjustment, removal, or alteration of any wires, equipment, or facilities owned or operated by others, including but not limited to telecommunications and cable television facilities. County will be responsible for taking appropriate action to cause such others to relocate, adjust, remove, or alter their wires, equipment, or facilities and to vacate and cease using Company's poles. Company's poles will not be removed until doing so can be accomplished without detrimental effect to the attachments of others. Company will not be required to remove its poles until such

other parties' wires, equipment, and facilities are no longer attached to the poles. Company will have a reasonable time after County has effected the removal of such other parties' wires, equipment, and facilities to remove Company's Facilities.


6. Counterparts. This agreement may be signed in multiple counterparts, each of which will be deemed an original, and all of which together will constitute only one agreement. A signed copy of this agreement delivered by facsimile, scanned image, or other electronic means is as effective as the original.

7. Entire Agreement. This agreement constitutes the entire agreement between the parties regarding the subject matter and supersedes all prior negotiations, representations, agreements, or understandings, written or oral, with respect to this subject matter.

8. Effective Date. This agreement will become effective when all parties have signed it. The date of this agreement will be the date this agreement is signed by the last party to sign it as indicated by the date associated with that party's signature.

Each party is signing this Actual Cost Reimbursement Agreement for Utility Relocation and Adjustment Work on the date stated opposite that party's signature.

ENTERGY MISSISSIPPI, LLC

By: 

Randall Vaughan
Senior Manager, Engineering

Date: 10/28/2021

MADISON COUNTY, MISSISSIPPI

By: _____
Karl Banks
President, Board of Supervisors

Date: _____

Attest:

Clerk, Board of Supervisors

(SEAL)

**ADJUSTMENT OF ENTERGY DISTRIBUTION FACILITIES FOR
BOZEMAN ROAD WIDENING PROJECT
MADISON COUNTY, MS**

SUMMARY OF COST

**ENTERGY WORK ORDERS # 6043788, 12192780
CEA# C6MD301128, C6MD302279**

ESTIMATE – BOZEMAN ROAD WIDENING PROJECT

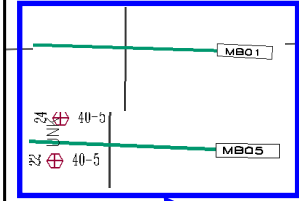
ITEM	SUBTOTAL AMOUNT
1. New Material:	\$ 65,027.95
2. Labor	\$ 343,128.52
3. Equipment and Corporate Overheads	\$ 152,365.43
4. Contingency	<u>\$ 112,104.38</u>
TOTAL COST OF JOB	<u>\$ 672,626.28</u>

Entergy Share of Pro-rated Cost: 7.69% =	\$ 51,724.96
County Share of Pro-rated Cost: 92.31% =	\$ 620,901.32

Entergy	WO Title: HWY-2020-GM01-DF400-BOZEMAN RD OH 1		WO: 6043788	Rev#: 1
	Address: Bozeman Rd, From Gluckstadt Rd to Reunion Pwky		Work Order ID:	
Local Office: 9050	Cust Name:	County/Parish: Madison	Date: 06/08/21	ARC Flash:
Tax Dist: 303	Cust Svc Entrance Size:	Latitude:	Designer: cpaz	
WO Type: HIGHWAY		Longitude:	Sub: MADISON	Phase:
Acct#:	SO#:	PAL SO#:	Circuit Bkr ID: MX03, MX05	Page: 1 of 3
Phone#: (346) 814-0811	VCAP #:	Scale 1"=100'		
Contact Person: Carlyn Paz	One Call #:			

ALL NEW POLES WILL BE PLACED 1FT ON CENTER INSIDE PRIVATE PROPERTY UNLESS OTHERWISE NOTED.

Voltage: 12470 GrdY/7200



P-1: DLOC 5620573423
 - Replace lower Pri. framing with PSX38A477.
 - Install two anchors with 30' and 35' lead length.

P-2: DLOC 5620673417
 - Install WP55-1A, PRX38A477, PSX38A477 and two anchors with 30' and 35' lead length.

P-3: DLOC 5620373401
 - Install WP55-1, PRXF31A477, PSXF31A477, P14A10, SN4A10 and LSW100FG.
New Device ID#: F021306

UPSTREAM DEVICE

P-21B: DLOC 5620373397
 -Remove pole, existing framing and guy span.

P-4: DLOC 5620273381
 - Install WP55-1A, PRXF31A477, PSX38A477, GSW900A477, XFMR and one anchors with 15' lead length.
Device ID#: G02730

Relocate Sec Span to P4

*** TO BE CONSTRUCTED IN CONJUNCTION WITH OVERHEAD PORTION WO 12069949 AND UNDERGROUND WO 12192780.**

Proposed UG & Riser See UG WO 12192780

Create a 41' slack with the existing Conductor from P1 to P2

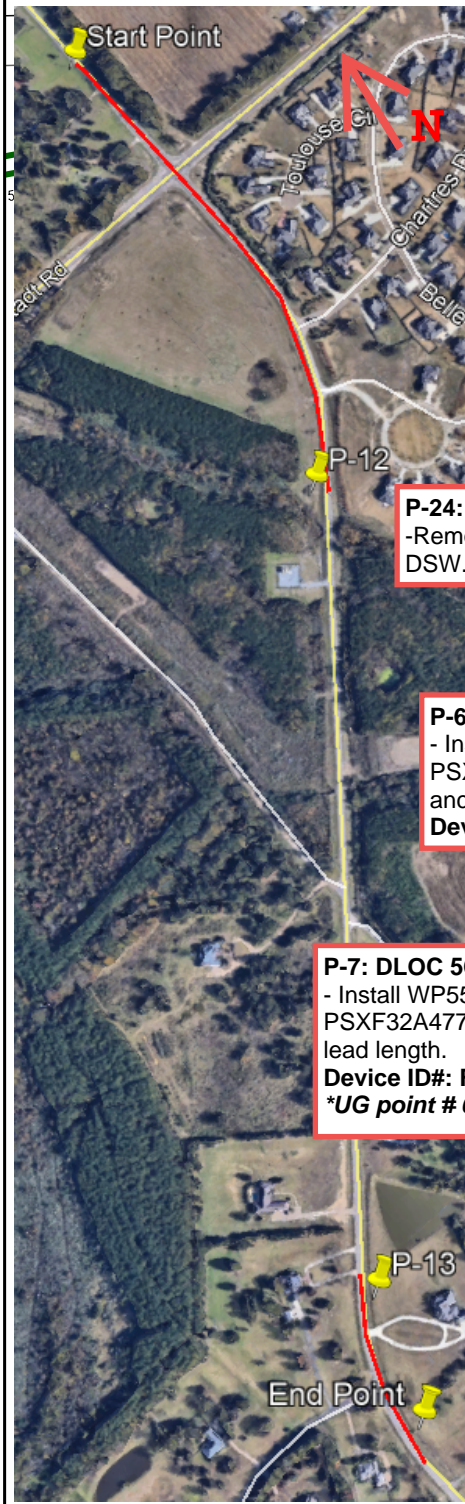
P-21: DLOC 5620573397
 -Remove pole, existing framing and guy span.

P-21A: DLOC 5621373397
 -Remove pole, down guy and anchor.

P-22: DLOC 5620373371
 -Remove pole, existing framing and Equipment.

P-5: DLOC 5620073350
 - Replace with a WP60-1A, existing framing for PRXF31A477, PSXF31A477 and Anchor down guy.

P-23: DLOC 5620373348
 -Remove pole and existing framing.



P-24: DLOC 5620273330
 -Remove pole, existing framing and DSW.

P-6: DLOC 5619573327
 - Install WP55-1, PRXF31A477, PSXF31A477, DSW900A477 and anchors with 13' & 15' lead length.
Device ID#: D007163

P-7: DLOC 5619373304
 - Install WP55-1, PRXF32A477, PSXF32A477 and anchors with 13' & 15' lead length.
Device ID#: F021348 & F027086
***UG point # 02-P (WO 12192780)**

P-25: DLOC 5620073307
 -Remove pole and existing framing
***UG point # 03-P (WO 12192780)**

Point#	Latitude	Longitude
P01	32.51839465	-90.13212177
P02	32.51828161	-90.13212386
P03	32.51781387	-90.13219889
P04	32.51713006	-90.13223639
P05	32.51652861	-90.13231844
P06	32.5158074	-90.13233074
P07	32.5151208	-90.1323945
P08	32.51444991	-90.13261125
P09	32.51413813	-90.1327405
P10	32.51386941	-90.13296529
P11	32.5134561	-90.13329075
P12	32.51336046	-90.13334818
P13	32.50699239	-90.13876896
P14	32.50689349	-90.13880683
P15	32.5063717	-90.13912287
P15A	32.50656133	-90.14001392
P16	32.50578664	-90.13929827
P21	32.51781373	-90.13212319
P21A	32.51782032	-90.13189159
P22	32.51710604	-90.13217015
P23	32.5164835	-90.13220692
P24	32.51580493	-90.13224008
P25	32.51509889	-90.13228544
P26	32.51442512	-90.13251834
P27	32.51383845	-90.13290928
P29	32.5063846	-90.13917
P30	32.50579222	-90.13934494
P30A	32.50581302	-90.13957028

CHARTRES DR

Entergy	WO Title: HWY-2020-GM01-DF400-BOZEMAN RD OH 1		WO: 6043788	Rev#: 1
	Address: Bozeman Rd, From Gluckstadt Rd to Reunion Pwky		Work Order ID:	
Local Office: 9050	Cust Name:	County/Parish: Madison	Date: 06/08/21	ARC Flash:
Tax Dist: 303	Cust Svc Entrance Size:	Latitude:	Designer: cpaz	
WO Type: HIGHWAY		Longitude:	Sub: MADISON	Phase:
Acct#:	SO#:	PAL SO#:	Circuit Bkr ID: MX03, MX05	Page: 2 of 3
Phone#: (346)814-0811	VCAP #:	Scale 1"=100'		
Contact Person: Carlyn Paz	One Call #:			

ALL NEW POLES WILL BE PLACED 1FT ON CENTER INSIDE PRIVATE PROPERTY UNLESS OTHERWISE NOTED.

**Proposed UG & Riser
See UG WO
12192780**

P-8: DLOC 5618773281
- Install WP55-1, PRX31A477, PSXF31A477 and an anchor with 15' lead length.
Device ID#: F021349 & F027087
*UG point # 06-P (WO 12192780)

P-9: DLOC 5618473272
- Install WP55-1A, PRX38A477, PSX38A477 and an anchor with 15' lead length.

P-10: DLOC 5617573260
- Install WP55-1A, PRXF30A477 and PSXF30A477
Device ID#: F021350
*UG point # P-14 (WO 12192780)

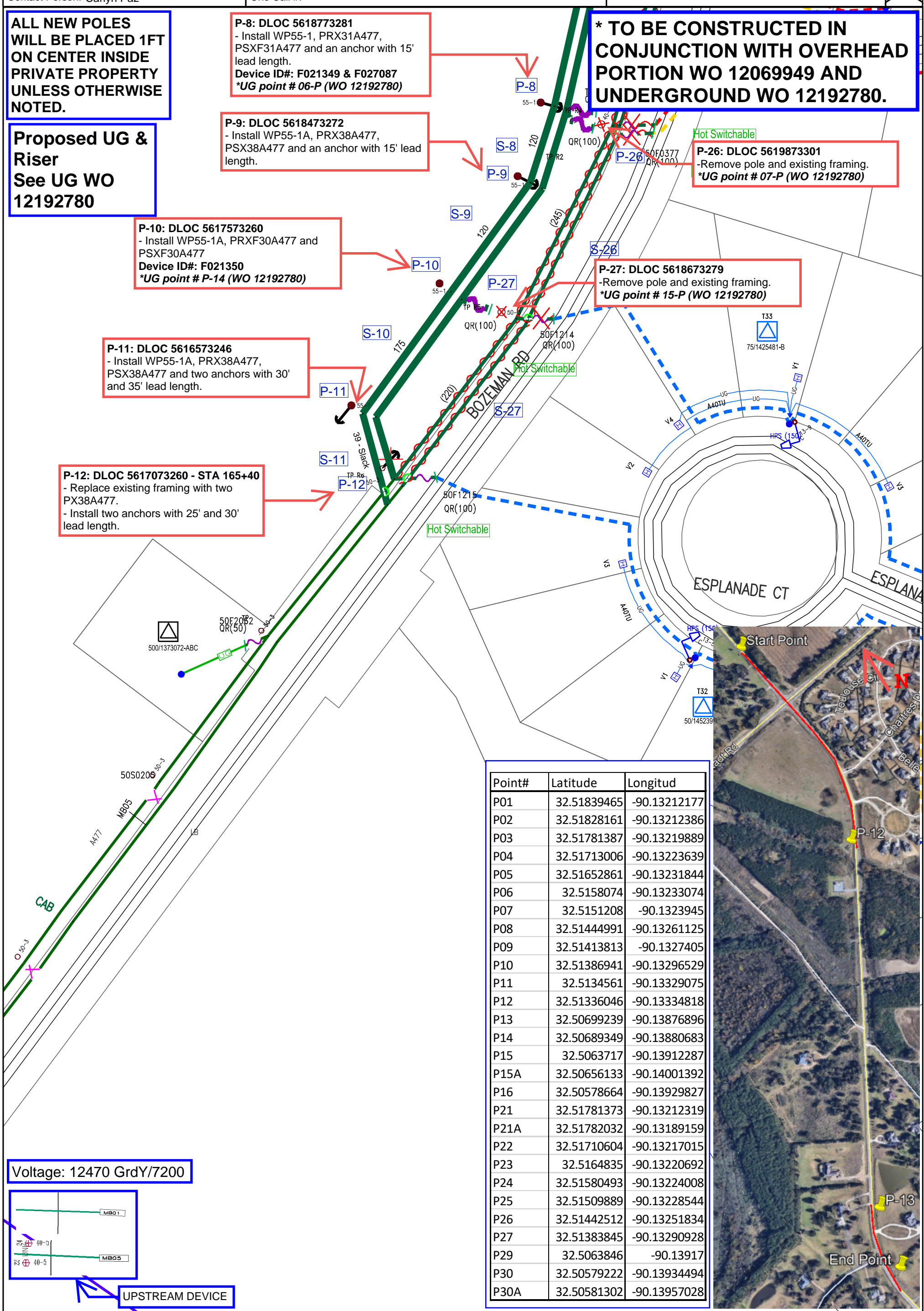
P-11: DLOC 5616573246
- Install WP55-1A, PRX38A477, PSX38A477 and two anchors with 30' and 35' lead length.

P-12: DLOC 5617073260 - STA 165+40
- Replace existing framing with two PX38A477.
- Install two anchors with 25' and 30' lead length.

*** TO BE CONSTRUCTED IN CONJUNCTION WITH OVERHEAD PORTION WO 12069949 AND UNDERGROUND WO 12192780.**

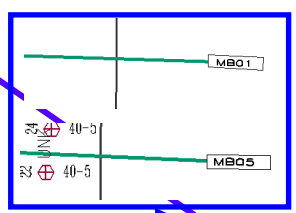
P-26: DLOC 5619873301
- Remove pole and existing framing.
*UG point # 07-P (WO 12192780)

P-27: DLOC 5618673279
- Remove pole and existing framing.
*UG point # 15-P (WO 12192780)



Point#	Latitude	Longitude
P01	32.51839465	-90.13212177
P02	32.51828161	-90.13212386
P03	32.51781387	-90.13219889
P04	32.51713006	-90.13223639
P05	32.51652861	-90.13231844
P06	32.5158074	-90.13233074
P07	32.5151208	-90.1323945
P08	32.51444991	-90.13261125
P09	32.51413813	-90.1327405
P10	32.51386941	-90.13296529
P11	32.5134561	-90.13329075
P12	32.51336046	-90.13334818
P13	32.50699239	-90.13876896
P14	32.50689349	-90.13880683
P15	32.5063717	-90.13912287
P15A	32.50656133	-90.14001392
P16	32.50578664	-90.13929827
P21	32.51781373	-90.13212319
P21A	32.51782032	-90.13189159
P22	32.51710604	-90.13217015
P23	32.5164835	-90.13220692
P24	32.51580493	-90.13224008
P25	32.51509889	-90.13228544
P26	32.51442512	-90.13251834
P27	32.51383845	-90.13290928
P29	32.5063846	-90.13917
P30	32.50579222	-90.13934494
P30A	32.50581302	-90.13957028

Voltage: 12470 GrdY/7200



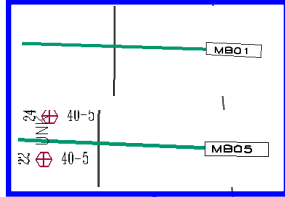
UPSTREAM DEVICE

Entergy	WO Title: HWY-2020-GM01-DF400-BOZEMAN RD OH 1		WO: 6043788	Rev#: 1
	Address: Bozeman Rd, From Gluckstadt Rd to Reunion Pwky		Work Order ID:	
Local Office: 9050	Cust Name:	County/Parish: Madison	Date: 06/08/21	ARC Flash:
Tax Dist: 303	Cust Svc Entrance Size:	Latitude:	Designer: cpaz	
WO Type: HIGHWAY		Longitude:	Sub: MADISON	Phase:
Acct#:	SO#:	PAL SO#:	Circuit Bkr ID: MX03, MX05	Page: 3 of 4
Phone#: (346)814-0811	VCAP #:	Scale 1"=100'		
Contact Person: Carlyn Paz	One Call #:			

ALL NEW POLES WILL BE PLACED 1FT ON CENTER INSIDE PRIVATE PROPERTY UNLESS OTHERWISE NOTED.

*** TO BE CONSTRUCTED IN CONJUNCTION WITH OVERHEAD PORTION WO 12069949 AND UNDERGROUND WO 12192780.**

Voltage: 12470 GrdY/7200



Proposed UG & Riser See UG WO 12192780

P-13: DLOC 5598872980 - STA 136+80
 - Remove Push brace and anchor guy.
 - Replace sec framing with SC8A4T.
 - Install anchor with 25' lead length

Do not install new wire, use existing creating a slack of 38 from P13 to P14.

P-15A: DLOC 5596272987
 - Replace framing with PX28A10 and SN8A10.

P-29: DLOC 5598672972
 - Remove pole and existing framing.
 *UG point # 19-P (WO 12192780)

P-14: DLOC 5600073003
 - Install WP55-1A, PSX35A477, SC8A4T and an anchor with 25' lead length.

P-15: DLOC 286136127
 - Install WP55-1A, PSXF32A477, PX24A10, FUSE125QR for tap going west and anchor with 15' lead length.
 Device ID's#: F021366 & F021351
 *UG point # 20-P (WO 12192780)

Re-construct this portion to go from P15 to P15A.

P-30: DLOC 5598372959
 - Remove pole and existing framing.
 *UG point # 22-P (WO 12192780)

P-16: DLOC 5598572962
 - Install WP55-1A, PSXF32A477 and Side-walk.
 Device ID#: F021406
 *UG point # 21-P (WO 12192780)



P-30A: DLOC 559772964
 - Remove pole, down guy and anchor.

P-17: DLOC 5598372934 - STA 129+40
 - Replace existing Pri. framing with PSX38A477 and sec. framing with SC8A4T.

Point#	Latitude	Longitude
P01	32.51839465	-90.13212177
P02	32.51828161	-90.13212386
P03	32.51781387	-90.13219889
P04	32.51713006	-90.13223639
P05	32.51652861	-90.13231844
P06	32.5158074	-90.13233074
P07	32.5151208	-90.1323945
P08	32.51444991	-90.13261125
P09	32.51413813	-90.1327405
P10	32.51386941	-90.13296529
P11	32.5134561	-90.13329075
P12	32.51336046	-90.13334818
P13	32.50699239	-90.13876896
P14	32.50689349	-90.13880683
P15	32.5063717	-90.13912287
P15A	32.50656133	-90.14001392
P16	32.50578664	-90.13929827
P21	32.51781373	-90.13212319
P21A	32.51782032	-90.13189159
P22	32.51710604	-90.13217015
P23	32.5164835	-90.13220692
P24	32.51580493	-90.13224008
P25	32.51509889	-90.13228544
P26	32.51442512	-90.13251834
P27	32.51383845	-90.13290928
P29	32.5063846	-90.13917
P30	32.50579222	-90.13934494
P30A	32.50581302	-90.13957028